

Southeastern Connecticut Regional Resource Recovery Authority (SCRRA)

Household Hazardous Waste Information and Schedule 2010

How do these HHW Collections Work?

All Regional Hazardous Waste Collections are held on Saturdays from 9:00 a.m. to 1:00 p.m. In 2010 there will be nine (9) HHW Collections held at the listed dates and locations. Remember, any household from any participating community can go to ANY of the 9 HHW collection events. Participating communities are:

Bozrah
Franklin
*Ledyard
*Norwich
*Stonington

Colchester
*Griswold
*Montville
*Preston
Voluntown

East Haddam
*Groton
*New London
Salem
*Waterford

*East Lyme
Lebanon
*North Stonington
*Sprague



When and Where are the collections in 2010?

April 17, 2010 - STONINGTON

Stonington Highway Department • Alpha Ave.
Information 860-535-5099

May 8, 2010 - EAST LYME

East Lyme Highway Department • 12 Roxbury Rd. (off Rte. 161)
Information 860-444-5864

June 5, 2010 - COLCHESTER

Johnston Middle School • Norwich Ave.
(formerly the Colchester Intermediate School)
Information 860-537-7288

June 19, 2010 - NORWICH

Norwich Public Works Garage • 50 Clinton Ave.
Information 860-823-3798

July 17, 2010 - GROTON

Groton Transfer Station • Flanders Rd.
Information 860-448-4083

August 21, 2010 - MONTVILLE

Tyl Middle School • Chesterfield Rd. (off Rte. 163)
Information 860-848-9411

September 11, 2010 - NORTH STONINGTON

Public Works Highway • 11 Wyassup Rd.
Information 860-535-0793

October 16, 2010 - GRISWOLD

Griswold Highway Garage • Rte. 138 (east of Rte. 395)
Information 860-376-7080

November 6, 2010 - LEDYARD

Dow Chemical Parking Lot • Rte. 12
Information 860-464-8740

• Authority Member Towns

(Printed on Recycled Paper)

What can I bring to these collections?

HOUSEHOLD HHW

Oil Paint & Stains

Paint Thinner

Drain Cleaners

Varnish

Photographic Chemicals

Nail Polish Remover

Oven Cleaners

Toilet Bowl Cleaners

Rechargeable Batteries

SHED & GARAGE HHW

Kerosene

Old Gasoline

Radiator Chemicals

Auto Body Chemicals

Fuel Additives

Car Battery Acid

Camping Stove Fuel

Fluorescent Bulbs

LAWN & GARDEN HHW

Insecticides

Pool Chemicals

Herbicides

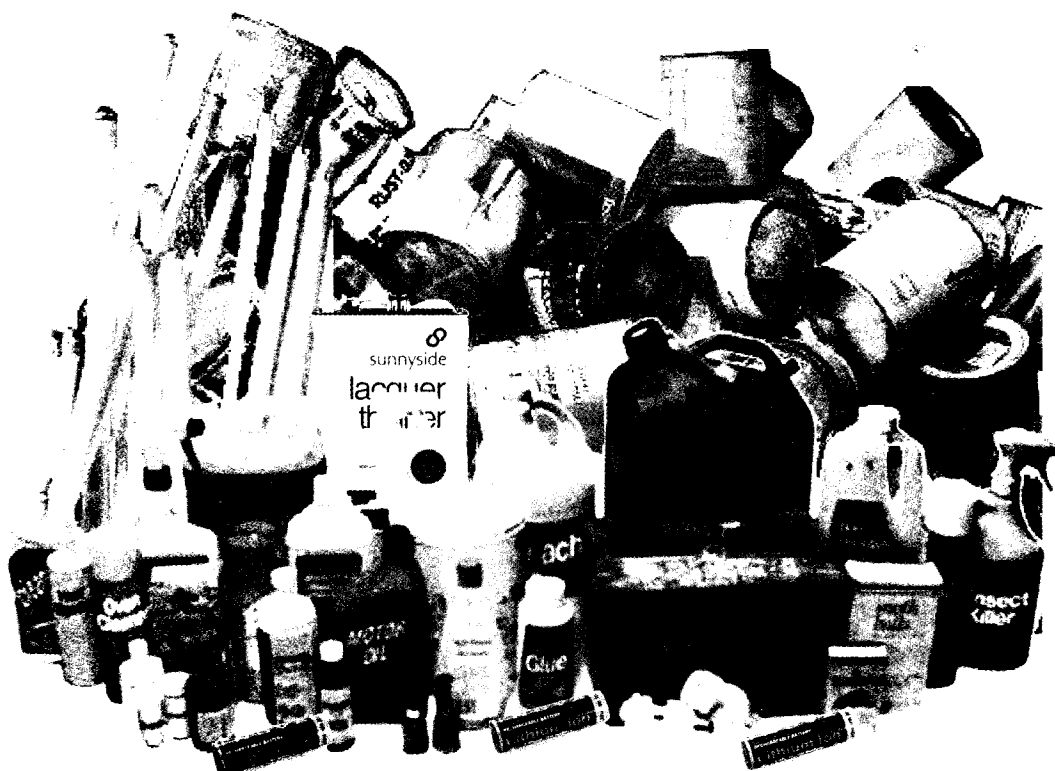
Rat Poison

Moth Balls

Fungicides

Round Up

And much more....



What is NOT Accepted?

Latex Paint • Tires • Ammunition/Gun Powder

Auto or Marine Flares

Radioactive Materials (smoke detectors, etc.)

Large Commercial/Industrial generators of HHW are not accepted. Households with more than 20 gallons or 20 lbs. must call the regional office at: 860-464-2509

Use caution when transporting HHW materials! Use the original containers when possible.

Visit us at www.SCRRRA.org